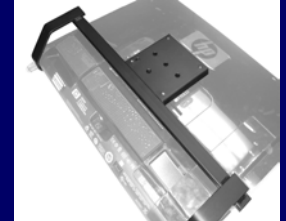




Introducing the VMAHP-22 VESA Mount Adapter Kit for the HP TouchSmart IQ500 Series All-in-One Desktop and HP dx9000 TouchSmart Business PC

Provides the ability to attach your HP Touchsmart to VESA compliant mounting devices

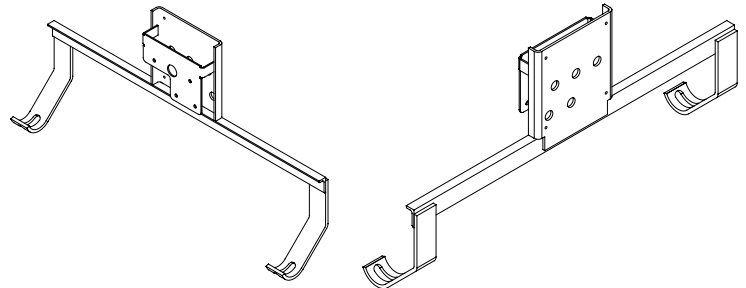


VESA Mount Adapter Kit for HP TouchSmart IQ500 Series and dx9000 Business PC

The VMAHP-22 is a custom mount adapter solution designed specifically for the HP TouchSmart IQ500 Series all-in-one desktop and dx9000 TouchSmart Business PC. The VMAHP-22 allows these HP models to be mounted with VESA compliant mounting devices, such as a wall mount bracket or zero footprint articulating arm, that provides the VESA 100 and correct weight capacity for the TouchSmart computer.

- The VMAHP-22 VESA Mount Adapter integrates with the existing stand attachment interface on the back of the computer. Our patent pending design requires no modifications made to the computer, ensuring warranty is not voided. Our exclusive cradle design eliminates stress on the backplane from repeated vibrations associated with the touch-enabled screen operation and movement.
- The VMAHP-22 provides the correct support and mount hole interface for 22" TouchSmart models to be attached to VESA compliant mounting devices.
- All steel, welded construction with durable powder coat finish. Proudly Made in the USA.
- Approved by HP Business PC Division.

The HP TouchSmart PC brings a new level of interaction to desktop computing that caters to multiple environments. Hospitality, Education, Conference Rooms, and Kiosks are just a few examples of the interactive experiences now, only one touch away. The ability to mount the HP TouchSmart allows for the computer to be strategically placed to attract usage as well as correctly position the touch-enabled screen for a more inviting and comfortable interaction experience.



VMAHP-22 VESA Mount Adapter Kit

Color	Black - Powder Coat
Compatibility	The VMAHP-22 is compatible with HP 22" TouchSmart IQ500 Series models and 22" dx9000 TouchSmart Business PC models.
Dimensions (approx.)	Width: 21.00"; 533.4 mm Height: 11.50"; 292.1 mm Depth: 3.50"; 88.9 mm
Weight (approx.)	Actual: 3.5 lbs.; 1.60 kg Shipping: 4.00 lbs.; 1.82 kg
Other Features	Attachment interface design based on the VESA flat panel mounting interface (FPMI) standards, and compliant with the display mounting industry.
Warranty	3 years
Accessories	PPH-HP22 Stainless Steel clip-on power pack holder.

